



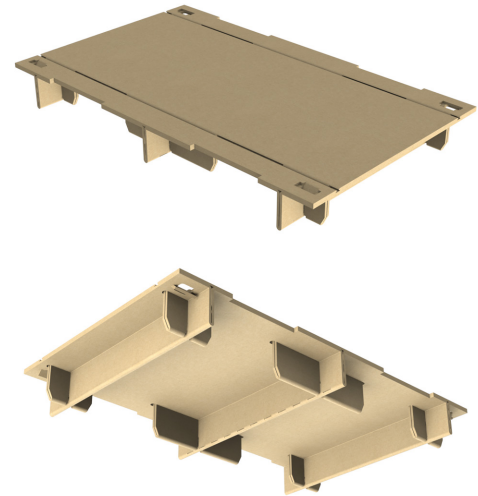
Safe Sustainable Savings™

SPECIFICATIONS:

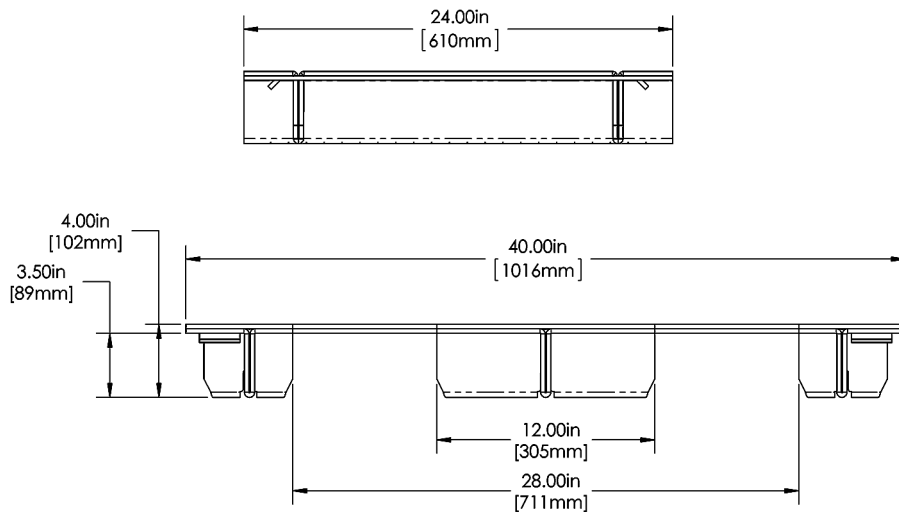
STANDARD
PALLET:

24 X 40 SK

Narrow Side x Wide Side	24 x 40 in.
Height	4.00 in.
Weight*	3.6 lb.
Design Static Load**	1860 lb.
Top Pallet Blank	39 x 40 in.
Bottom Pallet Blank	24 x 61 in.
Truckload Quantities***	3600 pallets (KDF)



FEATURES: No Bottom Deck, Two Way Entry, Smooth Top Surface.



* Pallet weight based on a specific corrugated board combination, which is adjustable for application requirements.

** Lifdek corrugated pallets are not designed for unsupported racking, unevenly distributed loads, or wet environments unless properly treated. Performance varies depending on board combinations, and each application requires testing to ensure pallets meet specific needs.

*** Truckload quantities on 53 foot (16.2m) trailers.